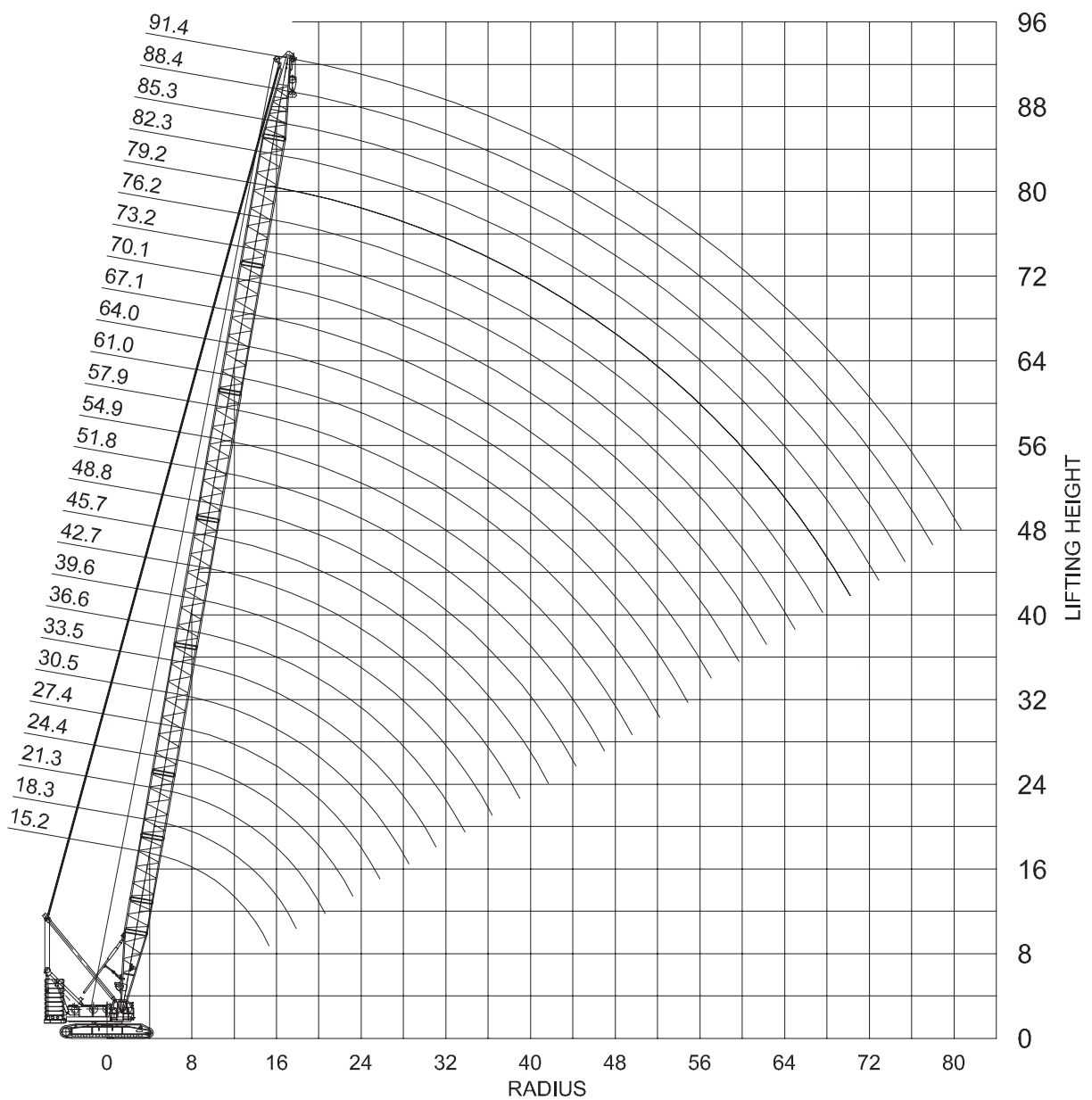


Dimensions are in millimeters.
The content in this document is mentioned for reference use only. Values may differ from current data. Always contact Mammoet for current project calculations.



Dimensions are in meters.
 The content in this document is mentioned for reference use only. Values may differ from current data. Always contact Mammoet for current project calculations.

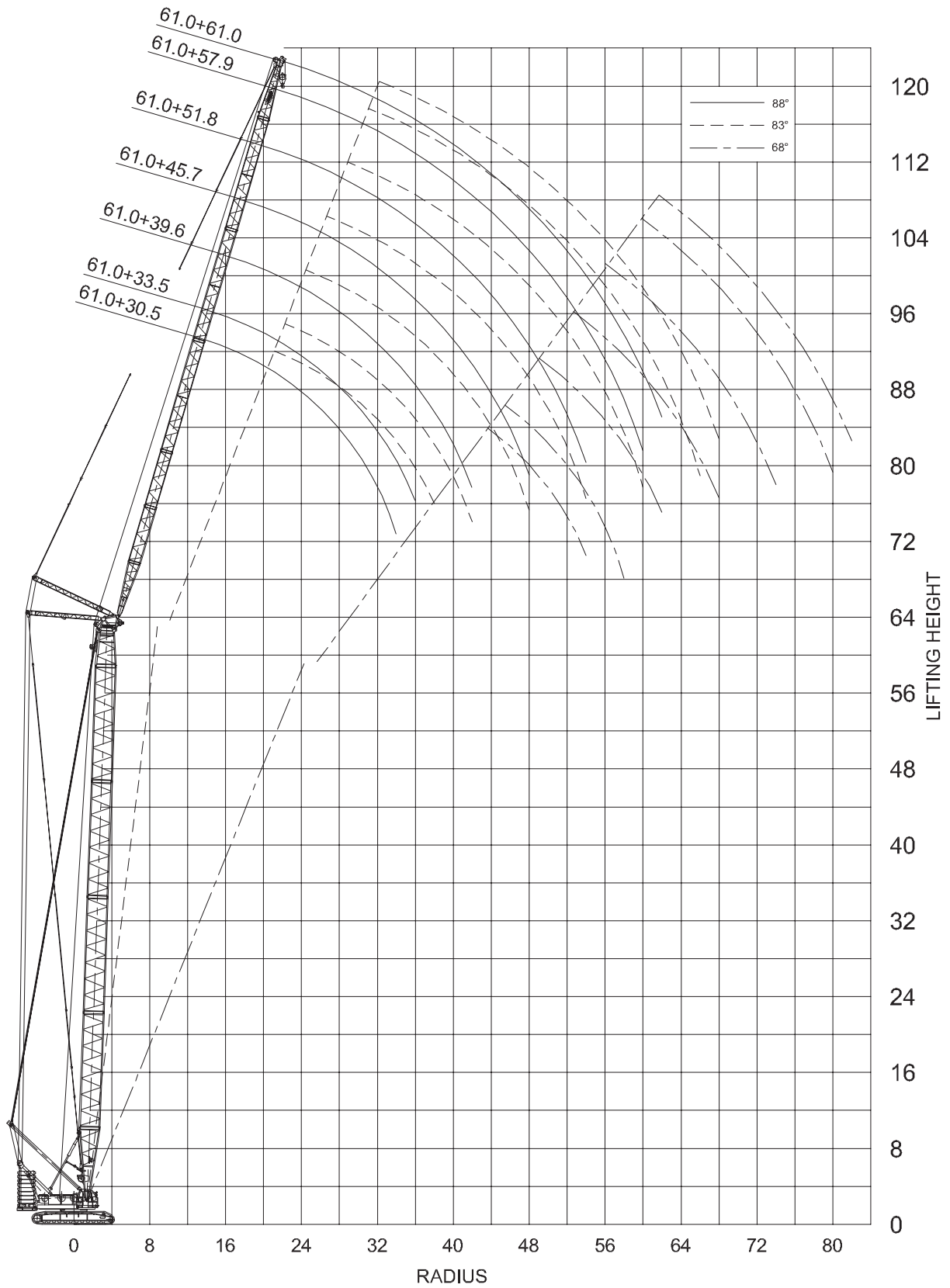
Main boom

- Crawler base: 7.9x6 m
- Ballast: 90 t + 24 t

Boom length (m)	Radius (m)																															
	4.6	5	6	7	8	9	10	12	14	16	18	20	22	24	26	28	30	32	36	40	44	48	50	54	58	62	66	70	74	78		
15.2	250	231	192	167	146	130	118	90	72.2																							
18.3		227	192	167	146	130	117	90.2	72.4	60.2																						
21.3			192	165	145	130	117	90.2	72.4	60.2	51.3	44.6																				
24.4				165	145	130	117	90.2	72.4	60.2	51.3	44.6	39.3																			
27.4				165	145	129	115	90.2	72.3	60	51.1	44.4	39.1	34.8																		
30.5					145	127	115	90.1	72.2	59.9	51.1	44.3	39	34.7	31.3	28.3																
33.5					141	127	113	90	72.1	59.8	50.9	44.1	38.7	34.5	30.9	28	25.5															
36.6						124	111	89.9	72	59.8	50.8	44	38.7	34.4	30.8	27.9	25.4	23.4														
39.6						115	107	87.8	72	59.7	50.7	43.9	38.6	34.3	30.7	27.8	25.2	23.1														
42.7							104	85.9	72	59.6	50.7	43.9	38.5	34.2	30.7	27.7	25.2	23	19.5													
45.7							97	83.8	70.8	59.4	50.4	43.6	38.3	34	30.4	27.4	24.9	22.7	19.2	16.4												
48.8								82	69.4	59.3	50.3	43.5	38.2	33.8	30.3	27.3	24.8	22.6	19.1	16.3												
51.8								79.5	68	58.7	50.2	43.4	38	33.7	30.1	27.1	24.6	22.4	18.9	16.1	13.9											
54.9									78	66.5	57.5	50	43.2	37.8	33.5	29.9	26.9	24.4	20.3	17.2	14.7	12.7	11.9									
57.9									75.5	65.2	56.4	49.5	43	37.7	33.3	29.7	26.8	24.2	20.1	17	14.5	12.5	11.6	10.9								
61										63.3	55.4	48.6	42.9	37.5	33.2	29.6	26.6	24.1	20	16.9	14.4	12.4	11.5	10.7	9.3							
64										62.5	54.2	47.6	42.2	37.3	32.9	29.4	26.4	23.8	19.7	16.6	14.1	12.1	11.2	10.4	9.1							
67.1										61.3	53.2	46.8	41.5	37.2	32.9	29.3	26.3	23.7	19.6	16.5	14	12	11.1	10.3	8.9	7.7						
70.1									59.4	51.2	45.6	40.6	36.5	32.6	29	26	23.5	19.4	16.2	13.7	11.7	10.8	10	8.6	7.3	6.2						
73.2										51.1	44.9	39.9	35.7	32.2	28.9	25.9	23.3	19.2	16	13.5	11.5	10.7	9.9	8.4	7.1	6						
76.2										48.4	44.2	39.2	35.1	31.6	28.6	25.8	23.2	19.1	15.9	13.4	11.4	10.5	9.7	8.2	6.9	5.8	4.8					
79.3										44.5	43.2	38.4	34.4	30.9	28	25.4	23	18.9	15.7	13.2	11.2	10.3	9.5	7.9	6.6	5.5	4.5	3.7				
82.3											39.7	37.6	33.6	30.2	27.3	24.8	22.6	18.6	15.4	12.9	10.9	10	9.1	7.6	6.3	5.1	4.2	3.3				
85.3											36.6	35.4	32.9	29.6	26.8	24.3	22.1	18.4	15.3	12.8	10.7	9.8	8.9	7.4	6.1	4.9	4	3.1	2.4			
88.4											33.3	32.2	31.2	29.2	26.3	23.9	21.7	18.1	15.2	12.7	10.6	9.7	8.8	7.2	5.9	4.8	3.8	2.9				
91.4											30.9	29.8	28.8	27.7	25.7	23.3	21.2	17.6	14.7	12.4	10.4	9.4	8.5	7	5.6	4.5	3.5	2.4				

t = metric tons.

The content in this document is mentioned for reference use only. Values may differ from current data. Always contact Mammoet for current project calculations.



Dimensions are in meters.
 The content in this document is mentioned for reference use only. Values may differ from current data. Always contact Mammoet for current project calculations.

Main boom with luffing jib

- Crawler base: 7.9×6 m
- Ballast: 90 t + 24 t
- Boom angle: 88°, 83°, 78°, 68°, 63°

Boom length (m)	Jib length (m)	Radius (m)																										
		9.8	10	11	12	14	16	18	20	22	24	26	28	30	32	34	36	38	40	42	44	46	48	50	54	58	62	
21.3	21.3	80	79.3	75.8	72.2	65.1	58	50.9	43.8	36.7	27.9																	
	27.4				70	64.7	58.6	52.9	47.2	41.5	36.9	31.7	26.6															
	33.5					54	51.9	49.2	46.5	42	37.4	33.6	30.4	27.3	23.9	20.4												
	39.6						39.5	38.7	37.6	36.3	34.8	33.1	31	28.2	26	23.8	21.4	18.9	16.4									
	45.7							29.4	28.7	28.1	27.5	27	26.5	25.9	24.7	23.6	22.4	21.4	20.3	18.6	16.9	15.1	13.3					
	51.8								26.6	26	24.9	23.8	22.7	21.6	20.4	19.3	18.2	17.3	16.3	15.3	14.3	13.4	12.5	11.6	10.7			
	57.9									20.9	20.4	19.5	18.5	17.5	16.6	15.8	15	14.3	13.5	12.9	12.3	11.8	11.2	10.7	10.2	9.3	8.2	
61										18.4	18.3	17.6	16.7	15.8	15	14.3	13.6	13	12.3	11.8	11.2	10.8	10.3	9.9	9.4	8.6	7.9	7
27.4	21.3		73.4	70.5	67.6	61.7	55.9	50.1	44.2	38.4	29.7																	
	27.4				67.5	62.4	57.3	52.2	47.1	42	37.2	32.8	27.7	22.3														
	33.5					54	52.1	49.4	46.8	42.6	37.8	33.9	30.6	27.8	24.5	21.2	17.6											
	39.6						39.5	38.6	37.5	36.3	34.8	33.2	31.3	28.5	26.2	23.9	21.7	19.5	17.1									
	45.7							28.7	28.1	27.5	27	26.5	25.9	24.7	23.6	22.4	21.4	20.4	19	17.5	15.7	13.8						
	51.8								25.7	25.4	24.5	23.5	22.4	21.3	20.2	19.2	18.1	17.2	16.2	15.3	14.3	13.4	12.5	11.7	10.8			
	57.9									20.4	20.1	19.3	18.4	17.4	16.5	15.7	14.9	14.2	13.5	12.9	12.3	11.8	11.2	10.8	10.3	9.4	8.4	
61										18.1	17.4	16.6	15.7	14.9	14.2	13.5	12.9	12.2	11.7	11.2	10.7	10.2	9.8	9.4	8.6	8	7.3	
33.5	21.3		67.5	66.4	65.3	60.2	55.1	49.9	44.8	39.7	31.2																	
	27.4				63.5	59.3	55.1	50.9	46.7	42.5	37.6	33.6	28.5	23.3														
	33.5					52.2	50.9	48.3	45.6	42.7	38.2	34.2	30.8	28	24.9	21.8	18.3											
	39.6						39.5	38.7	37.5	36.4	34.9	33.2	31.5	28.7	26.4	24.1	22.1	20	17.5	14.9								
	45.7							28.8	28.1	27.6	27	26.6	25.9	24.7	23.6	22.4	21.4	20.4	19.7	18.9	18.2	14.2	12.2					
	51.8								24.7	24.4	24.1	23.2	22.1	21.1	20	19	18	17.1	16.1	15.6	15.1	14.6	12.5	11.7	10.9			
	57.9									19.8	19.5	19.2	18.3	17.3	16.4	15.6	14.8	14.1	13.4	13.1	12.7	12.4	11.2	10.7	10.2	9.4	8.5	
61										17.5	17.3	16.4	15.6	14.8	14.1	13.4	12.8	12.1	11.8	11.5	11.2	10.2	9.8	9.4	8.6	8	7.3	
39.6	21.3		64.5	62.6	60.6	56.6	52.7	48.8	44.8	40.9	32.4																	
	27.4				54	54	53	49.5	46.1	42.7	38	33.9	29.2	24														
	33.5					48.5	48.1	47.1	44.8	42.6	38.2	34.5	31.1	28.2	25.3	22.3	18.8											
	39.6						37.4	37	36.6	36.2	35	33.3	31.5	28.9	26.6	24.2	22.3	20.4	17.9	15.4								
	45.7							28.8	28.2	27.6	27	26.6	25.9	24.7	23.6	22.5	21.5	20.4	19.2	17.9	16.2	14.5	12.5					
	51.8								23.4	23.2	22.9	21.9	20.8	19.8	18.8	17.8	16.9	15.9	15	14.1	13.3	12.5	11.7	10.9	9.2			
	57.9									19	18.7	18.4	18.1	17.2	16.3	15.5	14.7	14	13.3	12.7	12.1	11.6	11.1	10.7	10.2	9.4	8.4	
61										16.9	16.7	16.3	15.5	14.7	14	13.3	12.7	12.1	11.6	11	10.6	10.1	9.7	9.3	8.6	7.9	6.7	
45.7	21.3			54	54	53	49.3	45.4	41.9	33.4																		
	27.4				49	47.5	46	44.6	43.1	41.6	38.2	34.2	29.8	24.7														
	33.5					40.5	40.5	40.5	40.5	38.5	36.4	34.4	31.3	28.4	25.6	22.7	19.3											
	39.6						35.2	34.9	34.6	33.8	32.6	31.3	30.1	28.8	26.6	24.4	22.6	20.7	18.2	15.7								
	45.7							28.1	27.8	27.5	27.1	26.6	26	24.7	23.6	22.5	21.5	20.4	19.2	18	16.4	14.7	12.8					
	51.8								22.4	22.1	21.8	21.5	20.6	19.6	18.6	17.6	16.7	15.8	14.9	14	13.2	12.4	11.6	10.8	9.2			
	57.9									18.3	18	17.7	17.4	17.1	16.2	15.4	14.6	13.9	13.2	12.7	12.1	11.6	11	10.6	10.1	9.3	8.4	
61										16.3	16.1	15.9	15.4	14.6	13.9	13.2	12.6	12	11.4	10.9	10.4	10	9.6	9.2	8.5	7.5	5.6	
51.8	21.3			54	52.4	47.1	42.6	38.8	35.5	32.5																		
	27.4				40.5	40.5	40.5	39.1	35.8	33	30.5	28.3	25.5															
	33.5					40.5	40.5	38.7	35.6	32.9	30.6	28.4	26.5	24.9	23.2	19.9												
	39.6						32.7	32.3	31.9	31.5	31.1	30.2	28.1	26.3	24.8	23.2	21.9	20.6	18.4	16.1								
	45.7							26.2	25.9	25.7	25.4	25.1	24.8	24.5	23.5	22.5	21.5	20.5	19.3	18	16.5	14.9	13					
	51.8								21.2	20.9	20.6	20.3	20	19.4	18.4	17.4	16.5	15.6	14.8	13.9	13.1	12.3	11.5	10.7	9.2			
	57.9									17.3	17	16.7	16.4	16.1	15.3	14.5	13.8	13.1	12.6	12	11.5	11	10.6	10.1	9.3	7.3		
61										15.7	15.4	15.1	14.8	14.5	13.8	13.1	12.5	11.9	11.4	10.9	10.4	10	9.6	9.2	8.5	6.3	4.4	

t = metric tons.

The content in this document is mentioned for reference use only. Values may differ from current data. Always contact Mammoet for current project calculations.

Boom length (m)	Jib length (m)	Radius (m)																										
		9.8	10	11	12	14	16	18	20	22	24	26	28	30	32	34	36	38	40	42	44	46	48	50	54	58	62	
57.9	21.3				40.5	38.4	35.4	33	30	7.5	5.2																	
	27.4					39.5	35.7	32.4	29.6	27.2	25.1	23.3	21.6	20.1														
	33.5					37.2	35.5	32.3	29.6	27.2	25.1	23.3	21.7	20	18.9	17.7	16.5											
	39.6						27	27	27	27	25	23.2	21.6	20.1	18.9	17.7	16.7	15.6	14.7	13.8								
	45.7							24.5	24.2	23.9	23.6	23.1	21.5	20	18.8	17.6	16.6	15.6	14.7	13.8	13.1	12.4	11.7					
	51.8								20	19.7	19.4	19.1	18.8	18.5	17.9	17.2	16.3	15.4	14.6	13.8	13	12.2	11.4	10.6	9.2			
	57.9									16.4	16.2	16	15.8	15.6	15	14.4	13.8	13.1	12.5	11.9	11.4	10.9	10.5	10	7.9	6		
61									14.9	14.7	14.5	14.3	14.1	13.6	13	12.4	11.8	11.3	10.8	10.4	9.9	9.5	9.1	7	5	3.3		
61	30.5				35	31.6	28.7	26.2	24.1	22.2	20.6	19.1	17.8	16.7	15.5													
	33.5				27	27	27	26.1	24	22.1	20.5	19	17.7	16.6	15.5	14.5												
	39.6					27	27	26	23.8	22	20.4	18.9	17.6	16.5	15.4	14.5	13.6	12.8	12									
	45.7						23.6	23.3	23	21.8	20.2	18.8	17.5	16.4	15.3	14.4	13.5	12.8	12	11.4	10.7	10.1						
	51.8							19.4	19.4	18.8	18.5	17.5	16.4	15.5	14.5	13.3	12	11.8	11.6	11	10.4	9.9	9.5	8.6				
	57.9								15.9	15.7	15.5	15.3	15.1	14.3	13.5	12.9	12.2	11.6	11	10.6	10.1	9.6	9	7.1	5.3			
	61								14.5	14.3	14.1	13.9	13.7	13.4	13	12.4	11.8	11.3	10.7	10.3	9.8	9.1	8.4	6.3	4.4	2.8		

t = metric tons.

The content in this document is mentioned for reference use only. Values may differ from current data. Always contact Mammoet for current project calculations.