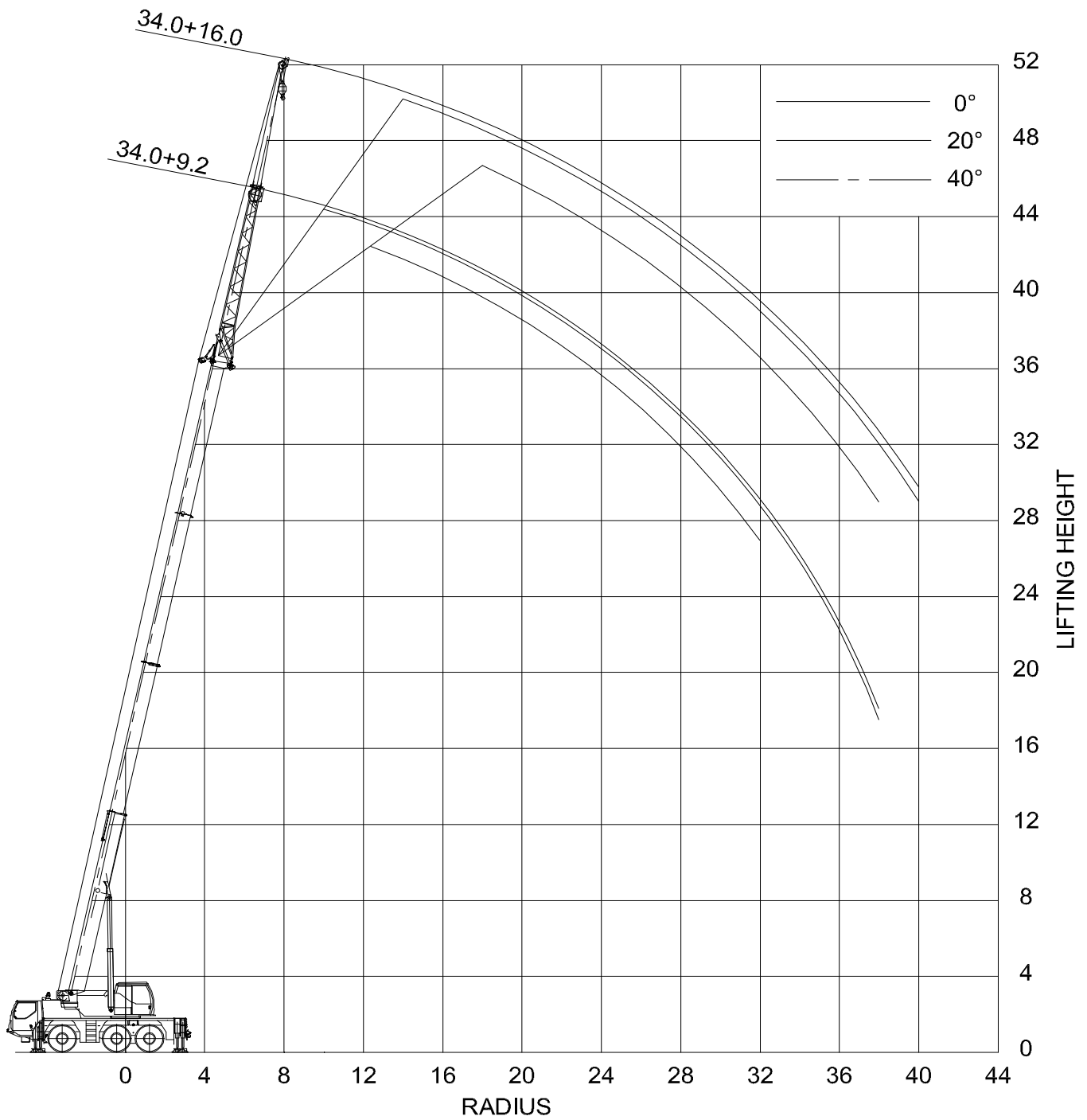


Mainboom (Outriggerbase 7.16x6.40m)																									
Boomlength	Ballast	Radius																							
		3	3.5	4	4.5	5	6	7	8	9	10	11	12	14	16	18	20	22	24	26	28	30			
10.3	7	41	37	33.5	30.5	27.6	23.1	19.2																	
15				26.1	26.7	27.3	26.3	23.3	19.5	16.2	13.8	11.6	10.1	8.5											
19.8				25.1	24.7	23.2	21.8	19.3	17.3	15.7	13.7	11.7	10.2	8.6	6.6	5.3									
24.5						19.6	18.5	16.6	15.1	13.7	12.6	11.2	9.9	8.7	6.7	5.4	4.3	3.6							
29.3						15.6	15.1	13.9	12.9	11.8	11	10.2	9.3	8.3	6.7	5.4	4.4	3.6	3	2.5	2.1				
32.1							12.2	11.9	11.6	10.8	10.1	9.5	8.8	8.1	6.6	5.4	4.4	3.6	3	2.6	2.1	1.8			
34							10	9.5	9.1	8.6	8.2	7.8	7.5	6.5	5.3	4.3	3.6	3	2.5	2.1	1.8	1.5			
10.3	6.1	41	37	33	29.9	27.3	22.7	18.4																	
15				26.1	26.7	27.3	26.3	22.9	18.7	15.4	12.7	10.5	9.1	7.6											
19.8				25.1	24.7	23.2	21.8	19.3	17.3	14.6	12.4	10.6	9.2	7.8	5.9	4.7									
24.5						19.6	18.5	16.6	15.1	13.7	11.7	10.1	8.9	7.8	6	4.8	3.8	3.1							
29.3						15.6	15.1	13.9	12.9	11.8	11	9.6	8.5	7.4	5.9	4.8	3.8	3.1	2.6	2.1	1.8				
32.1							12.2	11.9	11.6	10.8	10.1	9.3	8.3	7.3	5.8	4.8	3.8	3.1	2.6	2.2	1.8	1.5			
34							10	9.5	9.1	8.6	8.2	7.7	7.2	5.7	4.7	3.8	3.1	2.6	2.2	1.8	1.5	1.2			
10.3	4.7	40.5	36.5	33	29.6	26.9	21.9	17.7																	
15				26.1	26.7	27.3	26.3	22.3	17.8	14.5	11.7	9.6	8.3	6.9											
19.8				25.1	24.7	23.2	21.8	19.3	16.3	13.5	11.3	9.7	8.4	7.1	5.4	4.2									
24.5						19.6	18.5	16.6	15.1	12.6	10.7	9.2	8.2	7.1	5.5	4.2	3.4	2.8							
29.3						15.6	15.1	13.9	12.9	11.8	10.1	8.8	7.8	6.8	5.4	4.3	3.4	2.8	2.3	1.8	1.5				
32.1							12.2	11.9	11.6	10.8	9.8	8.5	7.5	6.6	5.3	4.2	3.4	2.8	2.3	1.9	1.5	1.2			
34							10	9.5	9.1	8.6	8.2	7.3	6.5	5.2	4.2	3.4	2.8	2.3	1.9	1.5	1.2	1			

Mainboom (Outriggerbase 7.16x4.50m)																									
Boomlength	Ballast	Radius																							
		3	3.5	4	4.5	5	6	7	8	9	10	11	12	14	16	18	20	22	24	26	28	30			
10.3	7	35.5	31.5	28.5	25.8	22.4	16.8	12.7																	
15				26.1	26.7	23.1	20	15.6	12.6	10.5	8.6	7.2	6.3	5.3											
19.8				25.1	24	20.7	18.1	14.4	11.8	9.9	8.4	7.2	6.3	5.4	4.1	3.2									
24.5						18.7	16.6	13.3	11	9.3	8	6.9	6.1	5.3	4.1	3.2	2.6	2							
29.3						15.6	15.1	12.4	10.4	8.8	7.6	6.6	5.8	5.1	4	3.2	2.6	2.1	1.6	1.3	1				
32.1							12.2	11.9	10	8.5	7.4	6.4	5.7	5	4	3.2	2.6	2.1	1.7	1.3	1				
34							10	9.5	8.4	7.2	6.3	5.6	4.9	3.9	3.1	2.5	2	1.6	1.3	1					
10.3	6.1	35	31.5	28.2	23.6	20.1	15.1	11.4																	
15				26.1	24.5	20.8	18	14	11.3	9.3	7.7	6.4	5.5	4.6											
19.8				25.1	21.7	18.7	16.3	12.9	10.5	8.8	7.4	6.4	5.6	4.8	3.5	2.7									
24.5						16.9	14.9	11.9	9.8	8.3	7	6.1	5.3	4.6	3.5	2.7	2.1	1.6							
29.3						15.4	13.7	11.1	9.2	7.8	6.7	5.8	5.1	4.4	3.4	2.7	2.1	1.7	1.3	1					
32.1							12.2	10.7	8.9	7.6	6.5	5.6	5	4.3	3.4	2.7	2.1	1.7	1.3	1					
34							10	8.7	7.4	6.4	5.5	4.9	4.3	3.3	2.6	2.1	1.6	1.3	1						
10.3	4.7	35	31	26	21.6	18.3	13.8	10.3																	
15				26.1	22.5	19	16.4	12.7	10.2	8.4	6.9	5.7	4.9	4.1											
19.8				23.6	19.9	17.1	14.9	11.7	9.5	7.9	6.7	5.7	4.9	4.1	3.1	2.3									
24.5						15.5	13.6	10.9	8.9	7.4	6.3	5.4	4.8	4.1	3.1	2.3	1.8	1.3							
29.3						14.1	12.5	10.1	8.4	7	6	5.2	4.5	3.9	3	2.3	1.8	1.4	1						
32.1							12	9.7	8.1	6.8	5.8	5	4.4	3.8	2.9	2.3	1.8	1.3	1						
34							9.5	7.9	6.7	5.7	4.9	4.3	3.8	2.9	2.2	1.7	1.3	1							



Ballast: 7t

Mainboom with fixed jib (Outriggerbase 7.16x6.40m)																													
Boomlength	JibLength	JibAngle																											
			3	3.5	4	4.5	5	6	7	8	9	10	11	12	14	16	18	20	22	24	26	28	32	36	40				
10.3	9.2	0	6.2	6.2	6.2	6.2	6.2	6.2	6.1	6	5.6	5.2	4.8	4.5	4	3.7													
		20				4.8	4.8	4.8	4.8	4.8	4.6	4.3	4.2	4	3.7	3.6													
		40							3.9	3.9	3.9	3.9	3.9	3.9	3.8	3.7													
	16	0	3	3	3	3	3	3	2.9	2.9	2.8	2.8	2.7	2.6	2.3	2.1	2	1.8	1.7										
		20								2.3	2.3	2.3	2.3	2.2	2.1	1.9	1.8	1.7	1.7										
		40												1.8	1.8	1.8	1.7	1.7											
29.3	9.2	0						6.2	6.1	6	5.9	5.7	5.5	5.4	5.2	4.9	4.4	3.7	3.2	2.7	2.2	1.9	1.3						
		20									4.8	4.7	4.5	4.4	4.2	4	3.9	3.8	3.4	2.9	2.4	2	1.4						
		40												3.9	3.8	3.7	3.7	3.6	3.6	3	2.5	2.1							
	16	0						3	2.9	2.9	2.8	2.8	2.8	2.7	2.6	2.5	2.3	2.2	2.2	2.1	2	1.9	1.5	1	0.7				
		20												2.3	2.2	2.1	2	1.9	1.9	1.8	1.7	1.7	1.6	1.2	0.8				
		40															1.8	1.7	1.7	1.6	1.6	1.6	1.6	1.2	0.8				
32.1	9.2	0						5.6	5.6	5.5	5.4	5.3	5.2	5	4.8	4.6	4.3	3.6	3.1	2.6	2.2	1.8	1.2	0.8					
		20									4.5	4.4	4.3	4.2	4	3.9	3.8	3.3	2.8	2.4	2	1.4	0.9						
		40												3.8	3.7	3.7	3.6	3.6	3.5	3	2.5	2.1							
	16	0							2.7	2.7	2.6	2.6	2.6	2.6	2.5	2.4	2.3	2.2	2.1	2	2	1.9	1.4	1	0.6				
		20														2.1	2.1	2	1.9	1.9	1.8	1.7	1.6	1.1	0.7				
		40															1.7	1.7	1.7	1.6	1.6	1.6	1.6	1.2	0.8				
34	9.2	0							5.1	5.1	5	5	4.8	4.6	4.3	4.1	3.8	3.5	3	2.5	2.1	1.8	1.2	0.8					
		20										4.3	4.3	4.2	4	3.9	3.7	3.5	3.2	2.8	2.3	2	1.3	0.9					
		40														3.7	3.6	3.5	3.4	3.2	2.9	2.5	2.1	1.4					
	16	0								2.6	2.6	2.6	2.5	2.5	2.4	2.3	2.3	2.2	2.1	2	2	1.9	1.4	0.9	0.6				
		20														2.1	2	2	1.9	1.8	1.8	1.7	1.6	1.1	0.7				
		40															1.7	1.7	1.7	1.6	1.6	1.6	1.6	1.2	0.8				

Mainboom with fixed jib (Outriggerbase 7.16x4.50m)																													
Boomlength	JibLength	JibAngle																											
			3	3.5	4	4.5	5	6	7	8	9	10	11	12	14	16	18	20	22	24	26	28	30	32	34				
10.3	9.2	0	6.2	6.2	6.2	6.2	6.2	6.1	6	5.6	5.2	4.8	4.5	4	3.7														
		20				4.8	4.8	4.8	4.8	4.8	4.6	4.3	4.2	4	3.7	3.6													
		40							3.9	3.9	3.9	3.9	3.9	3.8	3.7														
	16	0	3	3	3	3	3	3	2.9	2.9	2.8	2.8	2.7	2.6	2.3	2.1	2	1.8	1.7										
		20									2.3	2.3	2.3	2.3	2.2	2.1	1.9	1.8	1.7	1.7									
		40													1.8	1.8	1.8	1.7	1.7										
29.3	9.2	0						6.2	6.1	6	5.9	5.7	5.3	4.8	3.9	3.1	2.5	2	1.6	1.3	1	0.8	0.6						
		20									4.8	4.7	4.5	4.4	4.2	3.5	2.8	2.3	1.9	1.5	1.2	0.9	0.7						
		40												3.9	3.8	3.7	3.1	2.5	2.1	1.7	1.3	1							
	16	0						3	2.9	2.9	2.8	2.8	2.8	2.7	2.6	2.5	2.3	2.1	1.7	1.4	1.1	0.9	0.7						
		20												2.3	2.2	2.1	2	1.9	1.9	1.7	1.4	1.2	0.9	0.7					
		40															1.8	1.7	1.7	1.6	1.6	1.4	1.1	0.9	0.6				
32.1	9.2	0						5.6	5.6	5.5	5.4	5.3	5	4.7	3.7	3	2.4	1.9	1.5	1.2	0.9	0.7							
		20									4.5	4.4	4.3	4.2	3.4	2.7	2.2	1.8	1.4	1.1	0.9	0.6							
		40												3.8	3.7	3.7	3	2.4	2	1.6	1.3	1	0.7						
	16	0							2.7	2.7	2.6	2.6	2.6	2.6	2.5	2.4	2.3	2	1.6	1.3	1	0.8	0.6						
		20														2.1	2.1	2	1.9	1.9	1.7	1.3	1.1	0.8	0.6				
		40															1.7	1.7	1.7	1.6	1.6	1.3	1.1	0.8	0.6				
34	9.2	0							5.1	5.1	5	5	4.8	4.5	3.6	2.9	2.3	1.9	1.5	1.1	0.9	0.6							
		20										4.3	4.3	4.2	4	3.3	2.7	2.1	1.7	1.4	1.1	0.8	0.6						
		40													3.7	3.6	2.9	2.4	1.9	1.5	1.2	0.9	0.7						
	16	0								2.6	2.6	2.6	2.5	2.5	2.4	2.3	2.3	1.9	1.5	1.2	0.9	0.7							
		20														2.1	2	2	1.9	1.8	1.6	1.3	1	0.8	0.6				
		40															1.7	1.7	1.7	1.6	1.6	1.3	1	0.8	0.6				

