

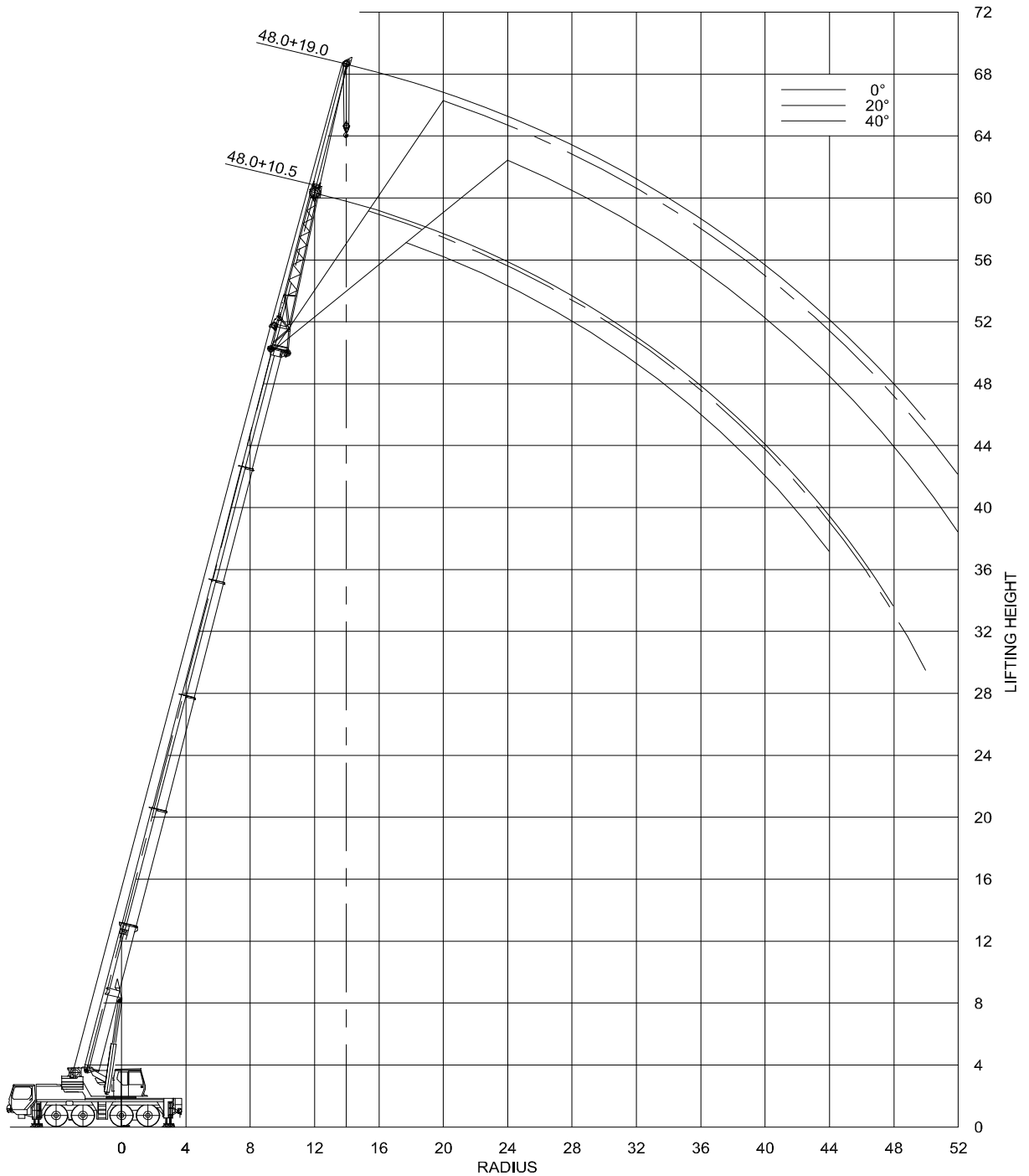
LIEBHERR LTM 1080-1 (SH)

Outrigger base: 8.2x7.0m

Ballast: 16.1t

		Mainboom (Outrigger base 8.2x7.0m)																												
Boom length	Ballast	Radius																												
		3	3.5	4	4.5	5	6	7	8	9	10	11	12	14	16	18	20	22	24	26	28	30	32	34	36					
10.8	6.6	61	56	51	46.5	42.5	35.5	30	23.6																					
14.2		61	56	51	46.5	42.5	35.5	28.8	23.6	19.1	16.8	14.5	12.1																	
17.6		57	53	49.5	46	42	32.5	26.1	21.4	17.7	14.9	13	11	9.6																
21.1				46	44	42	39	30	24.3	19.8	16.5	13.9	12.1	10.2	8.5	7.5	6.4													
24.5						35	33.5	28.5	23.2	19	15.8	13.8	12.9	11.9	9.7	7.6	6.2	5.1	4.5											
27.9							27.9	26.1	22.3	18.4	15.5	13.2	11.8	10.4	9	7.7	6.4	5.7	4.7	4.1										
31.3								22.6	21.2	18	15.2	13.4	12.3	11.1	8.9	7.2	6.2	5.5	4.5	3.9	3.3	2.9								
34.8									18.2	17.3	14.8	12.8	11.7	10.5	8.9	7.7	6.5	5.3	4.4	3.7	3.2	2.8	2.4	2						
28.2										15	14.3	12.8	11.4	9.9	8.5	7.3	6.1	5	4.1	3.5	2.9	2.5	2.1	1.8	1.5					
41.6										12.8	12.3	11.8	10.8	9.8	8.5	7	5.8	4.8	3.9	3.3	2.7	2.3	1.9	1.6	1.3	1.1				
45											10.8	10.5	10.1	9.6	7.9	6.4	5.3	4.3	3.5	2.9	2.4	2	1.6	1.3	1	0.8				
48												8.7	8.4	8.1	7.7	7.2	6.3	5.2	4.3	3.5	2.9	2.3	1.9	1.5	1.2	1				
10.8	8.5	61	56	51	47	43	36.5	30.5	25.3																					
14.2		61	56	51	46.5	43	36.5	30.5	25.3	20.5	17.8	15.5	13.1																	
17.6		57	53	49.5	46	42.5	35	28	23.1	19.4	16.4	14.1	11.7	9.6																
21.1				46	44	42	40	32.5	26.1	21.7	18.1	15.3	13.4	11.4	8.6	7.5	6.6													
24.5						35	33.5	30.5	24.9	20.8	17.4	14.8	13.4	11.9	10.2	8.4	6.8	5.7	4.8											
27.9							27.9	26.1	24	20.1	17	14.5	12.8	11	9	7.7	6.9	5.9	5.3	4.5										
31.3								22.6	21.2	19.6	16.7	14.4	13	11.6	9.8	8	6.6	5.6	5.1	4.4	3.8	3.3								
34.8									18.2	17.3	16.2	14	12.4	10.8	9.2	8	6.9	6.1	5	4.2	3.6	3.2	2.7	2.4						
28.2										15	14.3	13.7	12.3	10.9	8.7	7.5	6.7	5.7	4.6	3.9	3.4	2.9	2.5	2.1	1.8					
41.6										12.8	12.3	11.8	11.3	10.8	8.7	7.7	6.5	5.4	4.4	3.7	3.2	2.7	2.3	1.9	1.7	1.4				
45											10.8	10.5	10.1	9.6	8.6	7.2	6	5	4.1	3.4	2.8	2.4	2	1.6	1.3	1.1				
48												8.7	8.4	8.1	7.7	7.2	6.5	5.9	4.9	4	3.3	2.8	2.3	1.9	1.6	1.3	1			
10.8	16.1	62	56	52	47.5	44	38	33	28.5																					
14.2		62	56	52	47.5	44	37.5	32.5	28.3	24.6	21.6	18.9	16.1																	
17.6		57	53	49.5	46	43	37	32.5	27.7	24.1	21.1	18.4	15.7	12.1																
21.1				46	44	42	40	36.5	32	27.5	23.8	20.6	18.1	15.5	12	9.4	7.6													
24.5						35	33.5	30.5	28	25.6	22.9	19.9	17.7	15.5	12.1	9.6	7.9	7.1	6.3											
27.9							27.9	26.1	24.5	22.9	21	19.5	17.4	15.3	12.2	9.9	8	6.5	5.6	5										
31.3								22.6	21.2	19.9	18.7	17.5	16.4	15.2	12.3	10.1	8.3	6.9	6.3	5.6	4.9	4.2								
34.8									18.2	17.3	16.5	15.8	14.8	13.8	12.1	10	8.3	7	5.8	5.2	4.8	4.4	4.1	3.7						
28.2										15	14.3	13.7	13.1	12.4	11.1	10	8.5	7.2	6.1	5	4.5	4.1	3.8	3.5	3.1					
41.6										12.8	12.3	11.8	11.4	10.9	9.8	8.8	8	7.2	6.2	5.2	4.8	4.3	3.7	3.3	2.9	2.6				
45											10.8	10.5	10.1	9.6	8.6	7.8	7.1	6.5	5.9	5.4	4.5	3.9	3.4	3	2.6	2.3				
48												8.7	8.4	8.1	7.7	7.2	6.5	6	5.5	5.1	4.7	4.4	3.9	3.4	2.9	2.5	2.2			

		Mainboom (Outrigger base 8.2x5.0m)																											
Boom length	Ballast	Radius																											
		3	3.5	4	4.5	5	6	7	8	9	10	11	12	14	16	18	20	22	24	26	28	30	32	34	36				
10.8	16.1	55	49	44.5	40.5	37.5	32	26.8	21.2																				
14.2		55	49	44.5	40.5	37	31.5	25.5	21.2	18.3	15.4	13.5	11.5																
17.6		54	48.5	44	40	37	28.7	23.2	19.2	16.3	13.9	12.5	11	9.4															
21.1				46	44	39	34	26.6	21.6	18	15.2	13.1	11.5	9.9	8.5	7.5	6.4												
24.5						35	31.5	25.2	20.7	17.3	15	13.8	12.8	11.8	9.4	7.6	6.2	5.2	4.5										
27.9							27.9	24.2	20	16.9	14.4	12.5	11.4	10.4	9	7.7	6.4	5.7	4.9	4.2									
31.3								22.6	19.5	16.6	14.6	13.4	12.1	10.8	8.7	7.2	6.2	5.6	4.7	4	3.5	3							
34.8									18.2	16.1	13.9	12.2	11.4	10.5	8.7	7.7	6.5	5.4	4.5	3.9	3.4	2.9	2.5	2.2					
28.2										15	13.9	12.2	10.9	9.6	8.5	7.3	6.1	5.1	4.3	3.6	3.1	2.6	2.3	2	1.7				
41.6										12.8	12.3	11.8	10.8	9.8	8.4	7	5.9	4.9	4.1	3.4	2.9	2.5	2.1	1.8	1.5	1.2			
45											10.8	10.5	10.1	9.6	7.8	6.5	5.4	4.5	3.7	3.1	2.6	2.1	1.8	1.5	1.2	1			
48												8.7	8.4	8.1	7.7	7.2	6.3	5.3	4.4	3.6	3	2.5	2.1	1.7	1.4	1.1	0.9		





LIEBHERR LTM 1080-1 (SF)

Outrigger base: 8.2x7.0m

Ballast: 16.1t

Mainboom with Fixed Jib (Outrigger base 8.2x7.0m)																							
Boomlength	JibLength	JibAngle	Ballast	Radius																			
				10	12	14	16	18	20	22	24	26	28	30	32	34	36	38	40	42	46	50	54
38.2	10.5	0	16.1	8.7	8.4	7.9	7.1	6.4	5.9	5.3	4.9	4.3	3.7	3.2	2.8	2.4	2.2	2.1	1.9	1.8	1.4		
		20				6.6	6.3	6.1	5.7	5.2	4.7	4.3	4	3.5	3	2.6	2.3	2.1	2	1.8			
	40					5.5	5.4	5.3	5.2	4.8	4.4	4	3.6	3.1	2.7	2.3							
	0	3.4		3.3	3.2	3	2.9	2.8	2.8	2.7	2.6	2.5	2.4	2.3	2.2	2	2	1.8	1.6	1.4	1.2	0.9	
19	20					2.6	2.5	2.4	2.4	2.3	2.2	2.1	2.1	2	2	1.9	1.9	1.9	1.9	1.8	1.4	1.2	
	40							2.1	2.1	2	2	2	2	2	2	1.9	1.9	1.9	1.9	1.8	1.4	1.2	
41.6	10.5	0			7	6.5	6.1	5.6	5.1	4.7	4.3	3.9	3.6	3.2	2.8	2.6	2.4	2.1	1.9	1.6	1.2		
		20				5.8	5.4	5.1	4.7	4.5	4.2	4	3.7	3.4	3	2.6	2.4	2.3	2	1.7	1.2		
	40					5.1	4.8	4.5	4.3	4	3.8	3.7	3.4	3.2	2.7	2.5	2.3						
	0				3.1	2.9	2.8	2.8	2.7	2.6	2.6	2.5	2.4	2.4	2.3	2.3	2	1.8	1.7	1.4	1	0.7	
19	20					2.4	2.4	2.3	2.3	2.2	2.2	2.1	2.1	2	2	1.9	1.9	1.8	1.5	1.2	0.8		
	40							2	2	2	2	2	2	2	2	1.9	1.9	1.8	1.5	1.2	0.8		
45	10.5	0			5.7	5.3	4.9	4.5	4.2	4	3.7	3.5	3.3	3.1	2.8	2.5	2.1	1.8	1.6	1.3	0.9		
		20				4.7	4.4	4.1	3.9	3.6	3.4	3.3	3.1	2.9	2.8	2.6	2.3	2	1.7	1.5	1	0.6	
	40					4	3.7	3.5	3.3	3.2	3	2.9	2.7	2.7	2.4	2.1	1.8	1.5	1.1	0.8			
	0				2.7	2.7	2.6	2.6	2.5	2.5	2.4	2.3	2.2	2.1	2	1.9	1.8	1.7	1.5	1.1	0.8		
19	20					2.2	2.2	2.1	2.1	2.1	2	2	2	1.9	1.8	1.7	1.6	1.3	0.9	0.6			
	40						1.9	1.9	1.9	1.9	1.9	1.8	1.8	1.8	1.7	1.7	1.6	1.5	1.1	0.8			
48	10.5	0		4.1	4	3.8	3.6	3.4	3.3	3.1	2.9	2.7	2.6	2.4	2.3	2	1.8	1.5	1.3	0.8			
		20			3.7	3.5	3.4	3.2	3.1	2.9	2.8	2.6	2.5	2.3	2.2	1.9	1.7	1.4	1	0.6			
	40				3.5	3.3	3.2	3.1	2.9	2.8	2.7	2.5	2.4	2.2	2.1	1.8	1.5	1.1	0.7				
	0			2.4	2.4	2.4	2.4	2.3	2.2	2.1	2	1.9	1.9	1.8	1.7	1.6	1.5	1.4	1	0.7			
19	20					2.1	2	2	2	2	2	1.9	1.8	1.8	1.7	1.6	1.5	1.3	0.9	0.6			
	40						1.8	1.8	1.8	1.7	1.7	1.7	1.7	1.7	1.6	1.6	1.5	1.3	0.9	0.6			
38.2	10.5	0	6.6	8.7	8.4	7.3	6	4.9	4.2	3.9	3.4	2.9	2.4	2	1.7	1.4	1.2	0.9	0.7				
		20				6.6	6.3	5.5	4.5	3.7	3.4	3.1	2.7	2.2	1.9	1.6	1.3	1.1	0.8	0.6			
	40					5.5	5.4	4.9	4.1	3.4	3.1	2.8	2.4	2	1.7	1.4							
	0	3.4		3.3	3.2	3	2.9	2.8	2.8	2.5	2.3	2.2	1.9	1.6	1.4	1.1	0.9	0.8					
19	20					2.6	2.5	2.4	2.4	2.3	2.2	2.2	2	1.9	1.7	1.4	1.2	1	0.6				
	40							2.1	2.1	2	2	2	2	2	1.9	1.8	1.6	1.4	1.1				
41.6	10.5	0			7	6.5	5.9	4.8	4.3	3.7	3.1	2.6	2.2	1.8	1.5	1.2	0.9	0.7					
		20				5.8	5.4	5.1	4.5	3.7	3.5	2.9	2.4	2	1.7	1.4	1.1	0.9	0.7				
	40					5.1	4.8	4.5	4.1	3.4	3.2	2.7	2.2	1.8	1.5	1.2	1						
	0				3.1	2.9	2.8	2.8	2.7	2.6	2.5	2.3	2	1.7	1.4	1.1	0.9	0.7					
19	20					2.4	2.4	2.3	2.3	2.2	2.2	2.1	2	1.8	1.5	1.2	1	0.8					
	40							2	2	2	2	2	1.9	1.9	1.8	1.5	1.2	1					
45	10.5	0			5.7	5.3	4.9	4.5	4	3.3	2.7	2.2	1.8	1.4	1.1	0.8							
		20				4.7	4.4	4.1	3.9	3.6	3.1	2.6	2.1	1.7	1.4	1.1	0.8						
	40					4	3.7	3.5	3.3	2.9	2.4	1.9	1.6	1.2	0.9	0.7							
	0				2.7	2.7	2.6	2.6	2.5	2.5	2.4	2	1.6	1.3	1	0.8							
19	20					2.2	2.2	2.1	2.1	2.1	2.1	2	1.8	1.5	1.2	0.9	0.7						
	40						1.9	1.9	1.9	1.9	1.9	1.8	1.5	1.2	0.9	0.7							
48	10.5	0		4.1	4	3.8	3.6	3.4	3.2	2.6	2.1	1.7	1.3	1	0.7								